




Overton

Collection(s)	Overton
Colour(s)	Bark, Blush, Chili, Clay, Denim, Forest, Ivory, Lemongrass, Linen, Mist, Mustard, Natural, Onyx, Seafoam, Storm, Thistle
Product Type(s)	Heavy Commercial
Attributes	Halo Easy Care, Renew / Encore (Recycled), Oekotex 100
Styles	Modern, Plain
Composition	100% Recycled Olefin
Pattern Match	No
Pattern Repeat (cm)	Plain
Railroaded	No
Width (cm)	140CM
Weight (gsm)	220.0
Stain Repellent	Warguard
Usage	 Upholstery  Cushion  Lamp Shade
Guarantee	3 Years in accordance with our product type and care instructions

Test Results

Martindale (ISO 12947, 12kPA)	55,000 Cycles
AS/NZ 3837	Yes
ISO 5660	1S
Seam Slippage (ISO 13936-2, Load 180)	Warp 4.9, Weft 4.7
Piling Resist (ISO 12945-2)	4/5
Colourfastness to Light Xenon arc (ISO 105-B02, blue std 6)	>6
Colourfastness to Rubbing (ISO 105-X12)	Dry 5, Wet 5
Flammability AS/NZS 1530.3 - 1999	
Ignitability (0-20)	14
Spread of Flame (0-10)	0
Heat Involved (0-10)	1
Smoke Developed (0-10)	3
Oekotex Standard 100	2106125 CENTEXBEL
Quality Management System ISO9001	No



Overton



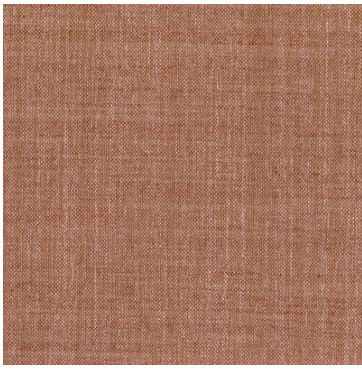
Bark



Blush



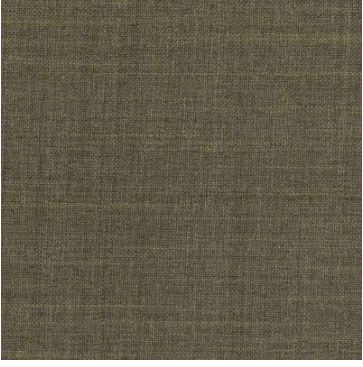
Chili



Clay



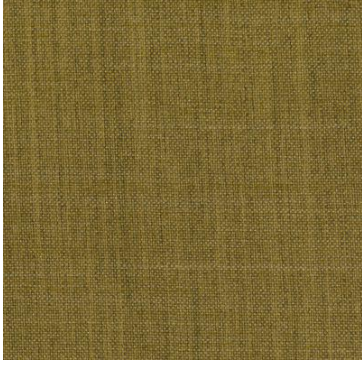
Denim



Forest



Ivory



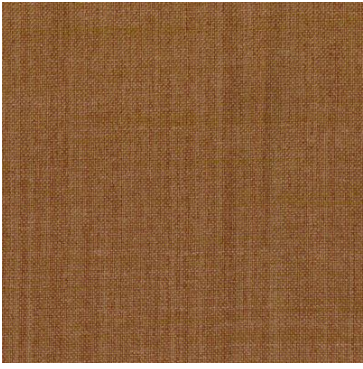
Lemongrass



Linen



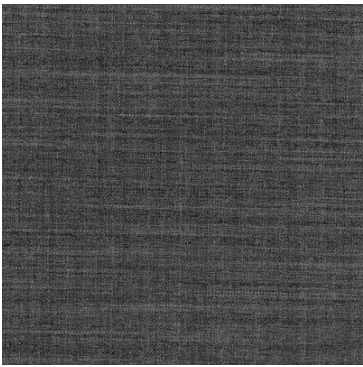
Mist



Mustard



Natural



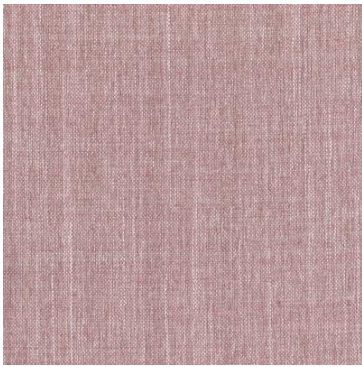
Onyx



Seafoam



Storm



Thistle